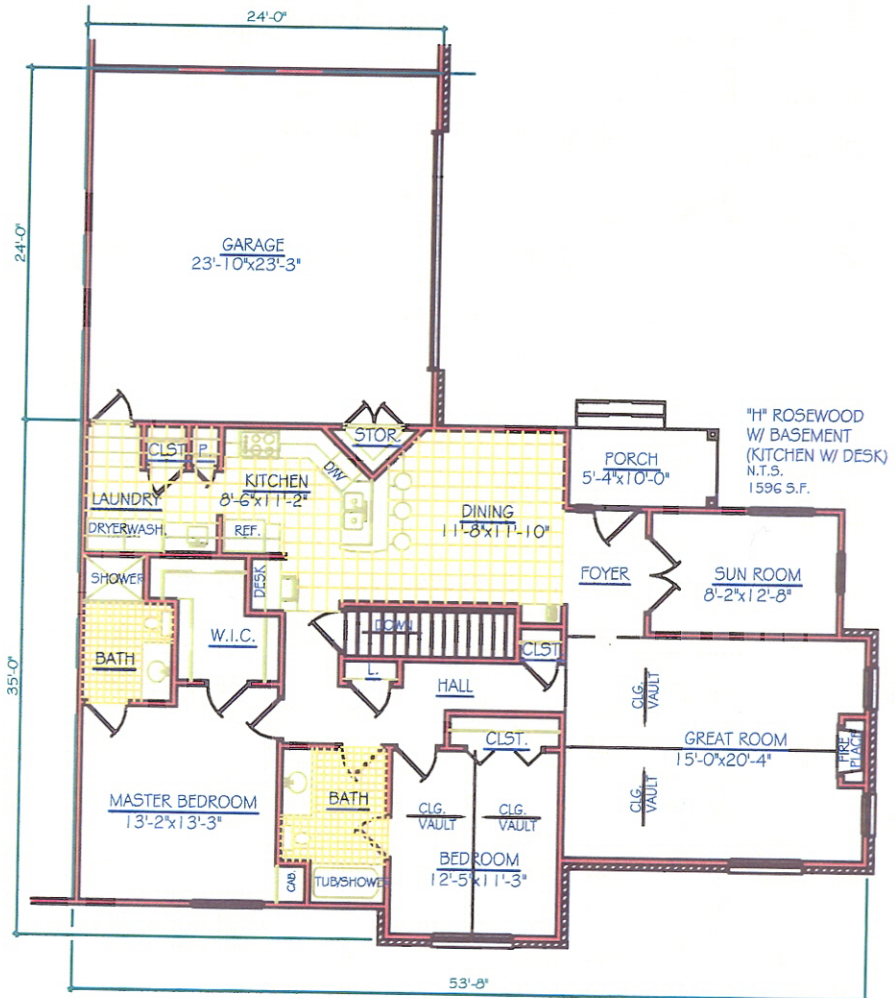


"D" BASEMENT PLAN FOR  
 "H" ROSEWOOD  
 N.T.S.  
 1162 S.F.



# Meadow Glen Condominiums

**ROSEWOOD**  
 2758 S.F. with  
 Basement & Kitchen  
 with Desk



ROSEWOOD: A one story residence containing a master bedroom suite w/ walk-in closet and master bath, second bedroom with vaulted ceiling and access to adjacent bath, a great room living area w/ vaulted ceiling, fireplace and wet bar, a dining area with built-in desk, kitchen w/ peninsula bar, laundry area w/ closet off garage entry, a covered porch, and a large two car garage with street level access. This home is 1,616 gross square feet on a crawl space.

Variation to this unit includes the following options:

A 1,162 gross feet basement provides extra living space. This level includes a gathering room with a wet bar, a media room for TV viewing. A billards/Table tennis space is adjacent to the media room and half-bath. The mechanical/storage room provides ample storage space.

This plan offers a variation in the Kitchen providing a built in desk.